



**Maltings Farm, Moreton, Ongar, CM5**

**BUTLER & STAG**



**Guide Price £1,150,000-£1,200,000.**  
**A simply stunning four bedroom 'New England' style house, built in 2019 on a generous plot with superb far reaching views over surrounding farmland. This luxury house boasts extensive living space arranged over two floors spanning over 2000 sq ft featuring three bedrooms with flexibility to arrange as two with a wonderful master suite.**



## Freehold

- Stunning Detached Family Home
- High Specification Fittings
- 7 Year Builders Guarantee Remaining
- South Westly Facing Garden
- Four Bedrooms/ Two Bathrooms
- Generous Plot/ Peaceful Location
- Underfloor Heating Throughout
- Chain Free

Designed and completed to the highest possible standard and specification, the overwhelming impact on entering is one of space and light. Accommodation is versatile, currently arranged with two ground floor bedrooms, one of which could easily be used as a play room or further living room. The kitchen/ breakfast room is spectacular and is the centre piece of this sumptuous house with white Corian work tops, bespoke handmade units and quality range of appliances. On the first floor there are two good sized bedrooms, including the master suite with shower and dressing rooms both with vaulted ceilings and oak beams along with a family bathroom. Further boasting a state of the art Smart Home automated system controlling light, sound, heating, security and CCTV.

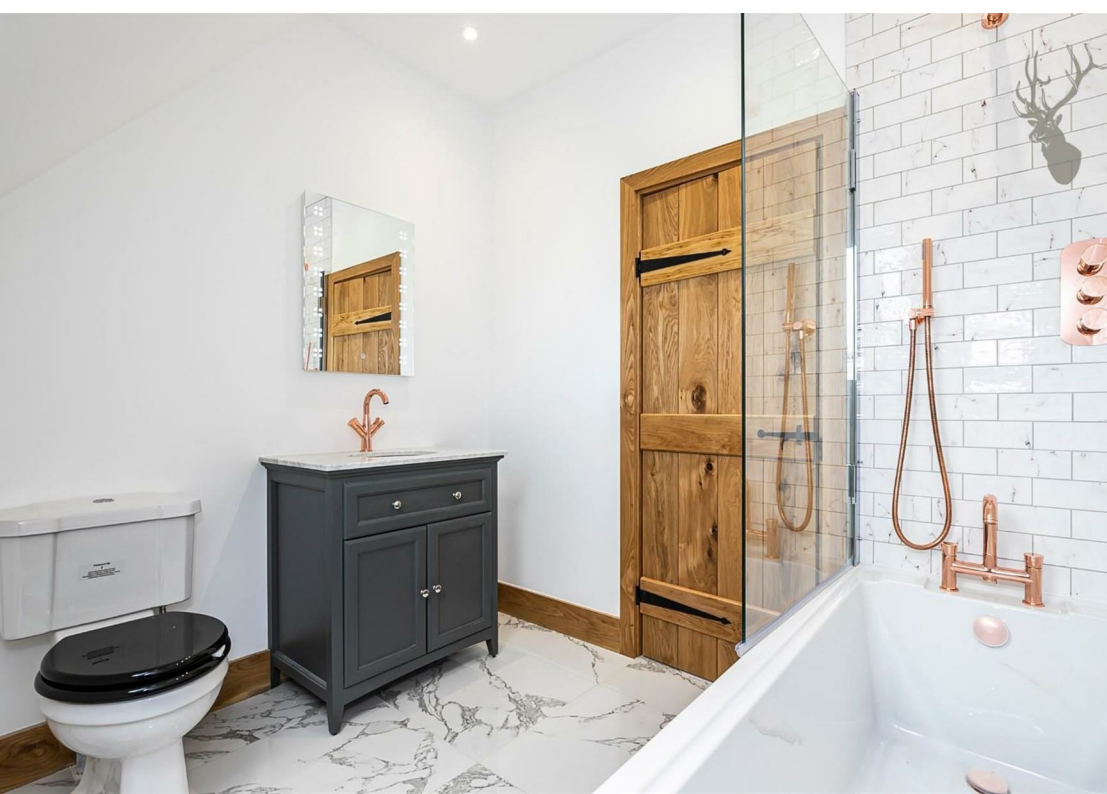
The house is approached via security gates which lead to a large gravel driveway with parking for several vehicles. The remainder of the grounds are laid to lawn with a wide patio which provides a delightful place to sit and enjoy the views of open countryside.

Spinney Lodge occupies a wonderful private location positioned in the picturesque village of Morton on the outskirts of Ongar. Communications are excellent with central London accessed by Epping tube station and the nearby M25 and M11 motorways.

There are good local shopping facilities available in nearby Ongar with more comprehensive shopping in the town of Epping. The area has an excellent choice of well-regarded state and private schools.

Offered chain free.

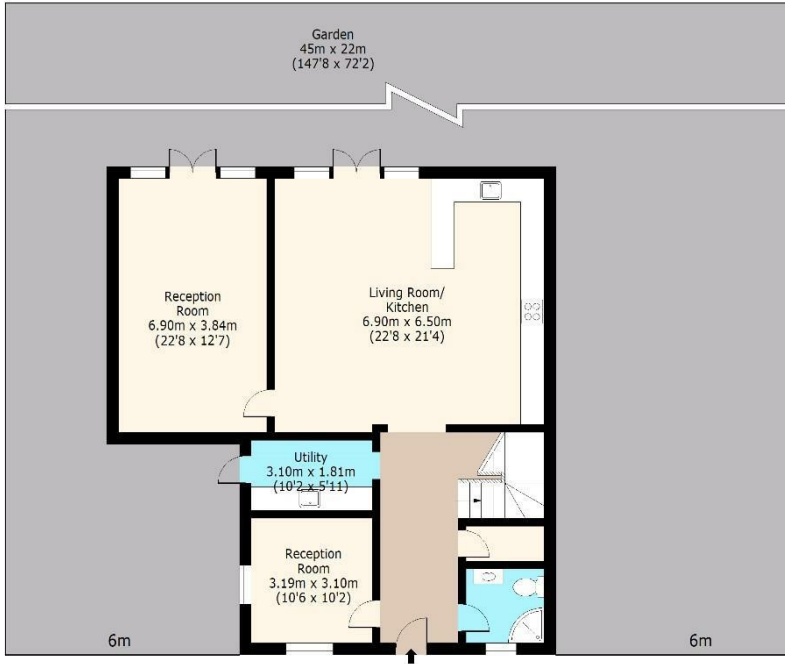




**The Maltings**

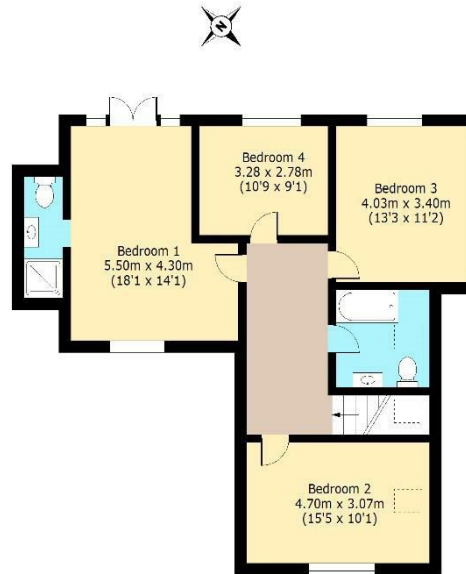


**Ground Floor**  
Approx. 109 Sq. meters (1173 Sq. feet)  
22m



Total area: approx. 194 Sq. meters (2089 Sq. feet)  
For illustration purposes only - not to scale

**First Floor**  
Approx. 85 Sq. meters (916 Sq. feet)



**BUTLER & STAG**

☎ 01992 667666

🏠 4 Forest Drive, Theydon Bois, Essex, CM16 7EY

✉ theydon@butlerandstag.com

[www.butlerandstag.uk](http://www.butlerandstag.uk)

IMPORTANT NOTICE - These particulars have been prepared in good faith and they are not intended to constitute part of an offer or contract. We have not performed a structural survey on this property and the services, appliances and specific fittings have not been tested. All photographs, measurements, floor plans and distances referred to are given as a guide and should not be relied upon.